





# Emergency Department STEMI Prompt

## Early Recognition

CP  $\leq$  12 hours

## Early Interpretation

12-lead ECG ( $\leq$  **10 minutes**)

## Early Identification

STEMI interpretation; Initiate ACS protocol;  
(Door in door out  $\leq$  **30 min**)

## Early Notification

Activate STEMI protocol

Transfer to PCI hospital within the target time

## Early Reperfusion

Door-to-needle time  $\leq$  **30 min**

Door-to-balloon time  $\leq$  **90min**

Door-to-balloon time for transfers: non PCI centre  $<$  **120 min**

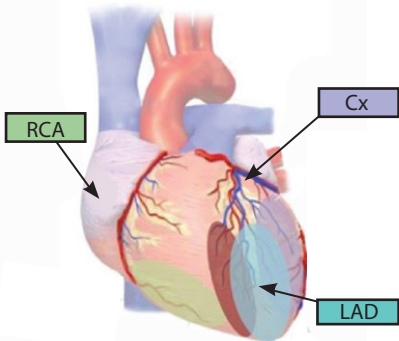
## Transfer of Care and Communication to Interventional Cardiologist

- Time of symptom onset
- Qualifying ECG
- Time of ROSC
- Hemodynamic status
- History of AMI/PCI/CABG
- Medications given and procedures
- Copy of ECG



## CARDIAC CARE NETWORK

### Anatomy of the Heart with Localizing Infarct Territories



I Lateral

aVR

V1 Septal

V4 Anterior

II Inferior

aVL Lateral

V2 Septal

V5 Lateral

III Inferior

aVF Inferior

V3 Anterior

V6 Lateral